

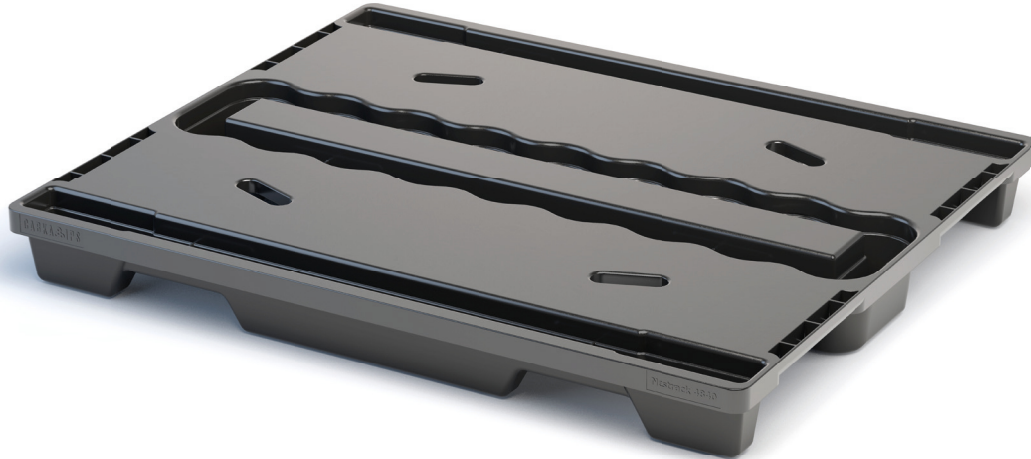
PRELIMINARY



**AK-WEST INC**  
Your Single Source for Reusable Containers and Material Handling Solutions

**NestRack®**

48 x 40



Nestable plastic pallet for loads up to 2700lbs in racking for an evenly distributed load. Due to the special design, the new NestRack® plastic pallet is nestable and at the same time suitable for high rack storage. With a net weight of only 22 lbs, the pallet can carry up to 2700lbs with evenly distributed load in racking. A revolutionary weight-to-load ratio. The runners ensure smooth transport on roller and chain conveyors and offer 4-way access for forklift trucks. The NestRack® comes in two versions: with open or closed deck.

#### Bottom support



> 4 runners (4R)



Wide foot for increased stability

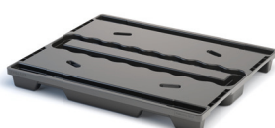


Open deck

#### Deck options



> open deck (OD)



> closed deck (CD)



Available with 4 handles



Runners ensure smooth transport on roller and chain

# PRELIMINARY

## Technical data\*<sup>1</sup>

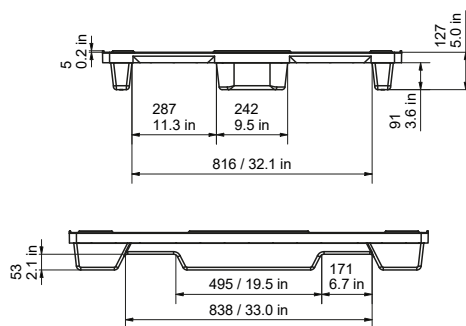
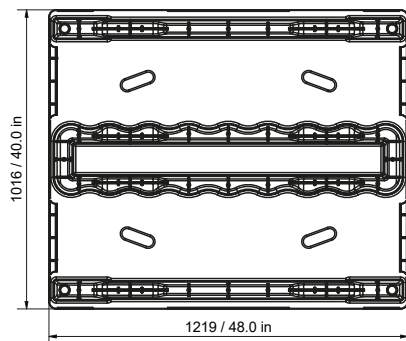
	Bottom support	Top deck	Dimensions [in] / [mm]	Load capacities* <sup>2</sup> [lbs] / [kg]			Weight[lbs] / [kg]		Pallets per	
				Static	Dynamic	Racking* <sup>4</sup>	HDPE		Stack	Truck
NestRack (CD-4R)	4 runners	closed	48 x 40 x 5.0 1219 x 1016 x 127	6000 2700	3000 1350	2700 1200	22.0	10.0	47	1410
NestRack (OD-4R)	4 runners	open					21.0	9.5		

Entry: 4 ways\*<sup>5</sup> | Nesting height: 2.1in / 53mm | Safetyrim: 0.2in / 5mm (optional)

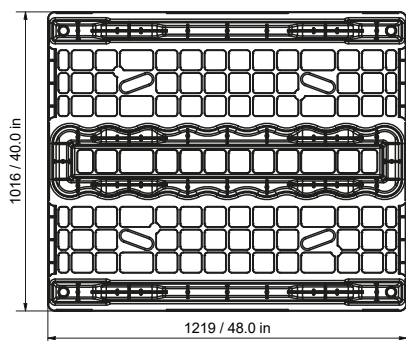
\*<sup>4</sup> racking only on the 48 inch side, to test in specific application

\*<sup>5</sup> only for forklift trucks

CD



OD



nominal sizes in mm | inch

## Options

Color:  (other colors on request\*<sup>3</sup>)

> Individual marking\*<sup>3</sup>

Anti-slip: 8 optional grommets (feet, under deck)

ESD prevention: —

\*<sup>1</sup> Figures can vary depending on the raw material used and options applied. \*<sup>2</sup> Guideline values are based both on experience and parts of test ISO 8611, which tests with evenly distributed loads at room temperature (68°F / 20°C). Varying data may result from different conditions of usage. Your specific requirements can be identified upon request. \*<sup>3</sup> Minimum quantity required ACM pallets should only be used and stored in a dry environment. We reserve the right to change any of the stated information without prior notice.

**Toll Free:** 1 (877) 979-8940 | **Tel:** (403) 279-8940 | **Fax:** (403) 225-1696 | **Email:** customerservice@ak-westinc.com

www.ak-westinc.com