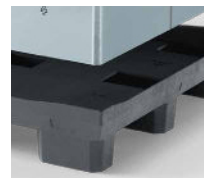


CabCube[®] 1.0

9 Feet



1210x 1010x 990 mm



| Technical Data | Bottom support | External Dimensions (mm) | Internal Dimensions (mm) | Maximum Load Capacities (kg) | | |
|-------------------------------|----------------|--------------------------|--------------------------|------------------------------|---------|---------|
| | | | | Stacking | Dynamic | Racking |
| CabCube [®] 1.0 (9F) | 9 feet | 1210x 1010x 990 | 1140x 940 x 816 | 1450 | 500 | — |

Benefits

1. Ergonomic design with optimal handling through handles on the lid
2. Large hatch for easy access to stored goods
3. Proper stacking through perfect lid-feet design
4. Reinforced sleeve for increased protection
5. Reusable product, 100% recyclable, base and lid made of recycled plastic

Options

1. Returnable collar
2. RFID transponders and other IoT options
3. Customizable sleeve dimensions
4. Customizable sleeve design
5. Individual marking and labeling
6. ESD: conductive
7. Also available with closed pallet deck



Technical data are guideline values based on experience and tests according to ISO 8611 with evenly distributed loads at 20°C. The data may vary based on intended use, product features, raw materials used and environmental influences. Upon request our salesteam will confirm the data required for your individual application.

CabCube® 1.0

9 Feet

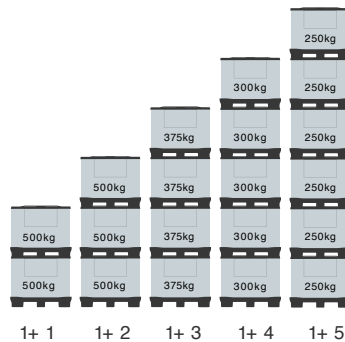


1210x 1010x 990 mm

| Standard Components | Base | Sleeve (optional) | Lid |
|---|---|--|---|
|  |  |  |  |
| Weight | 20,0 kg | 11,0kg | 8,5 kg |
| Material | PE | PP | PE |
| Dimensions | 1210x 1010x 200 mm | 1160x 962 x 850 mm | 1185x 989 x 72 mm |

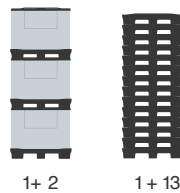
| Technical Data | CabCube® 1.0 9 Feet |
|----------------------|------------------------|
| Filling Volume | 875 L |
| Height of folded box | 222mm |
| Nesting Space | 26 mm |
| Weight | 39 kg |
| Entries | 4 way |
| Sleeve Thickness | 10,4 mm |
| Sleeve Density | 3000 gr/m² |

Stacking scenarios



| Maximum Load Capacities | |
|-------------------------|---------|
| Filling weight | 500 kg |
| Stacking load | 1450 kg |
| Stacking factor | 1+5 |
| Dynamic load | 500 kg |

in MegaTruck



Return Ratio
1: 4,7



| Truck Loads | Mega Truck (13,6x 2,48 x 3,0 m) |
|--------------------|------------------------------------|
| unfolded per stack | 3 |
| unfolded total | 78 |
| folded per stack | 14 |
| folded total | 364 |
| Return ratio | 1: 4,7 |
| Volume reduction | 79% |

Megatrailer utilization

Full containers



Empty containers



Technical data are guideline values based on experience and tests according to ISO8611 with evenly distributed loads at 20°C. The data may vary based on intended use, product features, raw materials used and environmental influences. Upon request our sales team will confirm the data required for your individual application.