

Straight Wall Containers

- Reusable shipping, storage, and work-in-process containers.
- Straight walls provide efficient internal and external space usage.
- Solid-sided containers have smooth inner walls for easy, sanitary cleaning.
- Mesh-sided containers allow hot or cold air ventilation.
- Injection-molded from high-density polyethylene.
- Available in 4 sizes and 3 styles.
- Modular design cubes 48" x 45" and 48" x 40" pallets.
- Interworking sizes allow mixed stacking on pallets.
- Compatible with automated handling systems.
- SW prefix denotes standard bottom.
- SX prefix denotes cross cube bottom.
- Lids snap tightly in place protecting contents from contaminants. Tie holes allow lids to be secured with ties.
- Color: Gray.

Straight, smooth interior walls allow for maximum cube utilization and easy insertion of dunnage

Reinforced corner ribbing provides maximum column strength for secure stacking

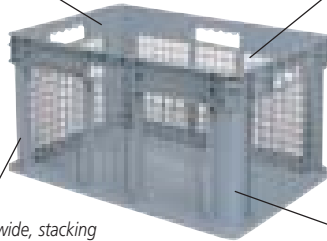


Deep, ergonomic handles for enhanced comfort, efficiency, and safety when lifting

Large label areas on all four sides

One-inch wall thickness

Open .72 x .90 mesh pattern allows high visibility and good airflow



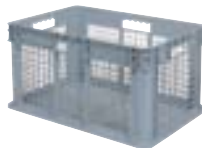
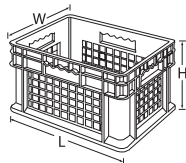
Strong, 1" wide, stacking rims and external ribbing provide added strength

Straight walls provide efficient cubing in trucks and on pallets



Handholds on all four sides provide an easy grip from any angle.

Three Styles Per Size:



Mesh Base/Mesh Sides



Solid Side/Solid Base



Solid Base/Mesh Sides

SWC's

Mesh Side & Base	Mesh Side w/ Solid Base	Solid Side & Base	Outside Dimensions						Inside Dimensions						Ctn. Qty.
			Inches			mm			Inches			mm			
			L	W	H	L	W	H	L	W	H	L	W	H	
37208	37278	37288	15¾	11¾	8¼	400	298	210	14¼	10¼	8	362	260	203	12
37608	37678	37688	23¾	15¾	8¼	603	400	210	22¼	14¼	8	565	362	203	4
37612	37672	37682	23¾	15¾	12¼	603	400	311	22¼	14¼	12	565	362	305	3
37616	37676	37686	23¾	15¾	16½	603	400	410	22¼	14¼	16	565	362	406	2

Order in carton quantities.



Solid steel dolly for efficient parts transport

Straight Wall Container Dolly

Model No.	Dimensions			Ctn. Qty.	Capacity Lbs.	Casters
	L	W	H			
RU843HR1624	24¾"	16¾"	4¾"	900 lbs.	1	3" Polyolefin

Compatible with Models 37608, 37678, 37688, 37612, 37672, 37682, 37616, 37676, 37686-

Industrial-Duty Straight Wall Containers



Our SX Cross Cube containers have a special bottom that allows larger containers to stack on top of smaller containers.

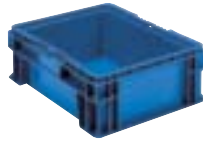


Custom Interior Dunnage

For special product applications, we will analyze your needs and design custom interior packaging to protect your product.



SW12070502



SW15120602



SW151208A2



SW15121002



SW24111002



SW241504A2



SW24150602



SW241508A2



SW24151002



SW241511A2



SW24151502



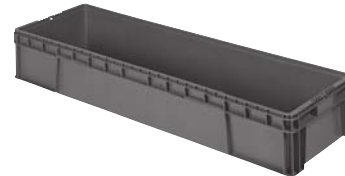
SW24220802



SW24221102



SW32150802



SW48150802

Straight Wall Containers

Model No.	Outside Dimensions						Capacity	
	Inches			mm			Lbs.	Kg
	L	W	H	L	W	H		
SW12070502	12	7½	5	305	191	127	60	27
SW15120602	15	12	5½	381	305	140	100	45
SW151208A2	15	12	7½	381	305	191	100	45
SX151208A4	15	12	7½	381	305	191	100	45
SW15121002	15	12	9½	381	305	241	100	45
SW24111002	24	11	9½	610	279	241	100	45
SW241504A2	24	15	4	610	381	102	100	45
SX241504A4	24	15	4	610	381	102	100	45
SW24150602	24	15	5½	610	381	140	100	45
SW241508A2	24	15	7½	610	381	191	100	45
SW241508A4	24	15	7½	610	381	191	100	45
SW24151002	24	15	9½	610	381	241	100	45
SX24151000	24	15	9½	610	381	241	100	45
SW241511A2	24	15	11	610	381	279	100	45
SX241511A4	24	15	11	610	381	279	100	45
SW24151502	24	15	14½	610	381	368	100	45
SW24220802	24	22	7½	610	559	191	100	45
SW24221102	24	22	11	610	559	279	100	45
SW32150802	32	15	7½	813	381	191	100	45
SW48150802	48	15	7½	1219	381	191	100	45
SX48150800	48	15	7½	1219	381	191	100	45



Interworking sizes allow mixed stacking on 48" x 40" and 48" x 45" pallets.

Lids

Model No.	Description	Outside Dimensions				Straight Wall Footprint
		Inches		mm		
		L	W	L	W	
SL12070100	Vacuum Formed	11¾	7¼	298	184	12" x 17"
SL15120100	Injection Molded	15	12	381	305	15" x 12"
SL24150100	Injection Molded	24	15	609½	381	24" x 15"
SL24110100	Injection Molded	24	11½	609½	285	24" x 11"
SL24220100	Injection Molded	24½	22½	610½	560	24" x 22"