

# Louvered Hanging Systems

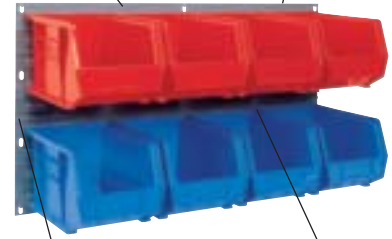


- Take back valuable floor space – maximize parts storage and handling efficiency.
- Louvered Panels used with AkroBins® offer the ultimate in storage flexibility.\*
- Secure stationary racks to the wall or floor and wall-mountable panels to a solid structure.
- Six different models are available to accommodate up to 288 AkroBins.
- Easy, one-person assembly.

\*AkroBins sold separately, see page 4.

Formed from 16-gauge cold-rolled steel for strength and durability

Attractive durable powder coated finish stands up to heavy-duty use



Horizontal ribs provide added strength

Louvers securely support AkroBins

30653 Louvered Floor Rack shown with 30239 AkroBins.



Develop a customized storage system by grouping any of our Louvered Panels.



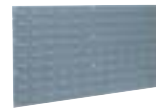
**30626 Double-Sided Snap Fastener Louvered Floor Rack**  
(Snap fasteners greatly reduce rack assembly time.)  
36" L x 20" W x 60" H  
914 x 508 x 1524 mm.  
700 lb. capacity.



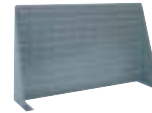
**30653 Louvered Floor Rack**  
35<sup>3</sup>/<sub>4</sub>" L x 32" W x 75<sup>1</sup>/<sub>8</sub>" H  
908 x 813 x 1908 mm.  
2000 lb. capacity.



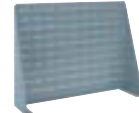
**30618 Louvered Panel**  
18" L x 19" H  
457 x 483 mm.  
160 lb. capacity.



**30636 Louvered Panel**  
35<sup>3</sup>/<sub>4</sub>" L x 19" H  
908 x 483 mm.  
160 lb. capacity.



**98636 Bench Rack**  
36" L x 8" W x 21" H  
914 x 203 x 533 mm.  
120 lb. capacity.



**98600 Bench Rack**  
27<sup>3</sup>/<sub>4</sub>" L x 8" W x 21" H  
705 x 203 x 533 mm.  
120 lb. capacity.

## Ordering Information:

### Louvered Panels And Bench Racks

Use this chart to determine the quantity of same-size AkroBins required to fill each panel. AkroBins sold separately.

| Model No. | Description   | AkroBins Model No. (Bin Wt. Capacity) |                 |                 |                 |                 |                 |                 |                 |                 |                 |                 |       |
|-----------|---|---------------------------------------|-----------------|-----------------|-----------------|-----------------|-----------------|-----------------|-----------------|-----------------|-----------------|-----------------|-------|
|           |   | Ctn.                                  | 30210 (10 lbs.) | 30220 (10 lbs.) | 30224 (30 lbs.) | 30230 (30 lbs.) | 30234 (50 lbs.) | 30235 (50 lbs.) | 30239 (50 lbs.) | 30240 (60 lbs.) | 30250 (75 lbs.) | 30255 (60 lbs.) | 30320 |
| ✓30618    | 18" x 19" Louvered Panel                              | 4                                     | 16              | 16              | 12              | 9               | 9               | -               | -               | -               | -               | 3               | -     |
| ✓30636    | 35 <sup>3</sup> / <sub>4</sub> " x 19" Louvered Panel | 4                                     | 32              | 32              | 24              | 18              | 18              | 9               | 8               | 8               | 4               | 6               | -     |
|           | 35 <sup>3</sup> / <sub>4</sub> " x 37" (2 Panels)     |                                       | 72              | 72              | 36              | 36              | 36              | 18              | 16              | 16              | 8               | 12              | -     |
|           | 35 <sup>3</sup> / <sub>4</sub> " x 55" (3 Panels)     |                                       | 104             | 104             | 54              | 54              | 54              | 27              | 28              | 28              | 14              | 18              | -     |
|           | 35 <sup>3</sup> / <sub>4</sub> " x 73" (4 Panels)     |                                       | 144             | 144             | 72              | 72              | 72              | 36              | 36              | 36              | 18              | 24              | -     |
| 30161     | 36" x 61" Louvered Panel                              | 1                                     | 96              | 96              | 72              | 54              | 54              | 28              | 24              | 24              | 12              | 18              | 10    |
| 30118     | 18" x 61" Louvered Panel                              | 1                                     | 48              | 48              | 36              | 28              | 28              | 14              | 12              | 12              | 6               | 9               | -     |
| 30661     | 36" x 61" Louvered Rack, Single Sided                 | 1                                     | 96              | 96              | 72              | 54              | 54              | 28              | 24              | 24              | 12              | 18              | 10    |
| 30638     | 18" x 61" Louvered Rack, Single Sided                 | 1                                     | 48              | 48              | 36              | 28              | 28              | 14              | 12              | 12              | 6               | 9               | -     |
| 30676     | 36" x 61" Louvered Rack, Double Sided                 | 1                                     | 192             | 192             | 144             | 108             | 108             | 56              | 48              | 48              | 24              | 36              | 20    |
| 30651     | Heavy Duty Louvered Rack, Single Sided                | 1                                     | 144             | 144             | 98              | 72              | 72              | 36              | 36              | 36              | 18              | 24              | 11    |
| ✓98600    | 27 <sup>3</sup> / <sub>4</sub> " Bench Rack           | 1                                     | 30              | 30              | 18              | 12              | 12              | 6               | 6               | 6               | -               | -               | -     |
| ✓98636    | 36" Bench Rack  | 1                                     | 40              | 40              | 24              | 18              | 18              | 9               | 8               | 8               | 4               | 6               | -     |

### Louvered Floor Racks

Use this chart to determine the quantity of same-size AkroBins required to fill each floor rack.

| Model No. | Description                              | Dimensions                     |    |                                | AkroBins Model Number (Bin Wt. Capacity) |     |      |                 |                 |                 |                 |                 |                 |                 |                 |                 |                 |       |   |
|-----------|--|--------------------------------|----|--------------------------------|--|-----|------|-----------------|-----------------|-----------------|-----------------|-----------------|-----------------|-----------------|-----------------|-----------------|-----------------|-------|---|
|           |  | Inches                         |    |                                | mm                                       |     |      | 30210 (10 lbs.) | 30220 (10 lbs.) | 30224 (30 lbs.) | 30230 (30 lbs.) | 30234 (50 lbs.) | 30235 (50 lbs.) | 30239 (50 lbs.) | 30240 (60 lbs.) | 30250 (75 lbs.) | 30255 (60 lbs.) | 30320 |   |
| 30626     | Double-Sided Snap Fastener Louvered Rack | 36                             | 20 | 60                             | 914                                      | 508 | 1524 | 192             | 192             | 144             | 108             | 108             | 54              | 48              | 48              | 24              | 36              | -     | - |
| ✓30653    | Louvered Floor Rack                      | 35 <sup>3</sup> / <sub>4</sub> | 32 | 75 <sup>1</sup> / <sub>8</sub> | 908                                      | 813 | 1908 | 288             | 288             | 192             | 144             | 144             | 72              | 72              | 72              | 36              | 48              | -     | - |

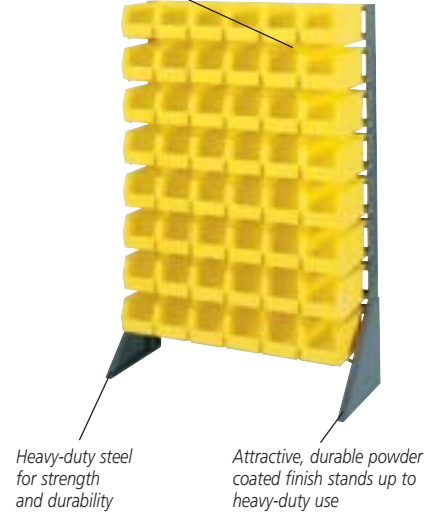
# Rail Hanging Systems



- Rail systems offer an economical storage solution to get the most from your AkroBins.
- Single and double rail units provide more flexibility in bin placement and hold multiple sizes of AkroBins.\*
- Mobile kit available to mobilize two-sided racks.
- Steel rail is ideal for work stations.

\*AkroBins sold separately, see page 4.

Rails securely support AkroBins



Bench racks, wall-mount, and single- or double-sided models are available to create a complete storage system.



30006  
**1-Sided, 12 Rail**  
250 lb. capacity.



30008  
**1-Sided, 16 Rail**  
250 lb. capacity.



30012  
**2-Sided Rack, 12 Rail**  
500 lb. capacity.



30016  
**2-Sided Rack, 16 Rail**  
500 lb. capacity.



30812  
**Bin Cart w/ Casters**  
14-gauge steel work top. 250 lb. capacity.

## Ordering Information:

### Rail Racks & Bin Cart

Use this chart to determine the quantity of same-size AkroBins required to fill each rack and cart. (AkroBins sold separately)

| Model No. | Description            | Ctn. Qty. | Dimensions |        |        |     | AkroBins Model Number (Bin Wt. Capacity) |                 |                 |                 |                 |                 |                 |                 |                 |                 |    |    |
|-----------|------------------------|-----------|------------|--------|--------|-----|--|-----------------|-----------------|-----------------|-----------------|-----------------|-----------------|-----------------|-----------------|-----------------|----|----|
|           |                        |           | Inches     |        | mm     |     | 30210 (10 lbs.)                          | 30220 (10 lbs.) | 30224 (30 lbs.) | 30230 (30 lbs.) | 30234 (50 lbs.) | 30235 (50 lbs.) | 30239 (50 lbs.) | 30240 (60 lbs.) | 30250 (75 lbs.) | 30255 (60 lbs.) |    |    |
| 30006     | Rack, 1-Sided, 12 Rail | 2         | 36         | 14 1/8 | 53     | 914 | 359                                      | 1346            | 96              | 96              | -               | -               | -               | 24              | 24              | 12              | -  |    |
| ✓30008    | Rack, 1-Sided, 16 Rail | 3         | 36         | 14 1/8 | 53     | 914 | 359                                      | 1346            | -               | -               | 48              | 48              | 48              | 24              | -               | -               | -  | 16 |
| ✓30012    | Rack, 2-Sided, 12 Rail | 2         | 36         | 20     | 53     | 914 | 508                                      | 1346            | 192             | 192             | -               | -               | -               | 48              | 48              | 24              | -  |    |
| ✓30016    | Rack, 2-Sided, 16 Rail | 3         | 36         | 20     | 53     | 914 | 508                                      | 1346            | -               | -               | 96              | 96              | 96              | 48              | -               | -               | -  | 32 |
| ✓30812    | Bin Cart               | 2         | 38 1/2     | 24     | 36 1/2 | 978 | 610                                      | 927             | 96              | 96              | 64              | 48              | 48              | 24              | 24              | 24              | 12 | 16 |



30812 Bin Cart shown with 30230 AkroBins.



30424

Two-Sided Racks can be mobilized with the mobile kit.

### Mobile Kit – Casters & Handle

| Model No. | Ctn. Qty. | Fits Hanging System No. | Casters       |
|-----------|-----------|-------------------------|---------------|
| ✓30424    | 1         | 30012, 30016            | 3" Polyolefin |

### Steel Rail

Use this chart to determine the quantity of same-size AkroBins required to fill the steel rail.

| Model No. | Ctn. Qty. | Dimensions |   |      |    | AkroBins Model Number (Bin Wt. Capacity) |                 |                 |                 |                 |                 |
|-----------|-----------|------------|---|------|----|--|-----------------|-----------------|-----------------|-----------------|-----------------|
|           |           | Inches     |   | mm   |    | 30210 (10 lbs.)                          | 30220 (10 lbs.) | 30224 (30 lbs.) | 30230 (30 lbs.) | 30234 (50 lbs.) | 30255 (60 lbs.) |
| ✓30148    | 1         | 48         | 3 | 1219 | 76 | 11                                       | 11              | 11              | 8               | 6               | 3               |

30148

### Steel Rail

Wall-mountable unit accepts 6 sizes of AkroBins. 110 lb. capacity.



# Easy Flow Gravity Hopper

Akro-Mils introduces the new Easy Flow Gravity Hopper. This unique, rotational-molded hopper provides an exceptional amount of product storage, while saving space through a compact vertical design. The large, angled top opening allows easy filling, whether used on the Gravity Hopper Floor Rack or freestanding on a work platform. The generous picking area provides easy access to the loaded product, while keeping it neatly contained and sorted.

- Great for: fasteners, assembly areas, KANBAN, inventory stock, merchandiser and work cells.
- 75 lbs. capacity per hopper; 900 lbs. total when used with the new 31625RACK.
- HDPE rotational molding for strength and durability.
- 2 color options: Red and Blue.



## Easy Flow Gravity Hopper

| Model No. | Inches |     |    | mm  |     |     | Load Capacity |        |       | Ctn. Qty. |
|-----------|--------|-----|----|-----|-----|-----|---------------|--------|-------|-----------|
|           | L      | W   | H  | L   | W   | H   | lbs.          | cu.in. | gal   |           |
| 31625     | 18     | 19½ | 10 | 457 | 495 | 254 | 75            | 2400   | 10.39 | 1         |

# Gravity Hopper Floor Rack

Akro-Mils' Gravity Hopper Floor Rack is designed especially for the new Easy Flow Gravity Hopper. This easily assembled rack is designed to hold 6 large Gravity Hoppers on each side, making your picking, sorting or assembly operations work more efficiently and quickly. The rack reduces the amount of product stored on floors and table tops, improving safety and production.

- 13 gauge steel.
- 900 lbs. load capacity.
- Adjustable rail heights.



## Gravity Hopper Floor Rack

| Model No. | Inches |    |    | mm  |     |      | Rack Load Cap. (lbs) | Ctn. Qty. |
|-----------|--------|----|----|-----|-----|------|----------------------|-----------|
|           | L      | W  | H  | L   | W   | H    |                      |           |
| 31625RACK | 36     | 36 | 69 | 914 | 914 | 1753 | 900                  | 1         |

